

Ensuring regulatory compliance in
new and existing LPG installations.



Presented by

Brian Murphy – Technical Services Engineer

March 2015



LPG - Basic Properties

- Umbrella term describes Propane, Butane, Propylene & Butylene.
- Highly flammable fossil fuel derived from oil.
- Liquid under pressure, released as a gas.
- Heavier than air (unlike Natural Gas)
- Flammability limits of 2% - 10%
- Typically used outside of Natural Gas areas with exceptions.
- Available in both bulk and cylinder storage options.

LPG - Uses

- Commercial – Space & water heating, catering, crop drying, other industrial processes
- Domestic – Central heating, cooking, gas fires, bbq's & patio heaters,
- Automotive – Limited but growing autogas market, forklifts.

Bulk LPG installations

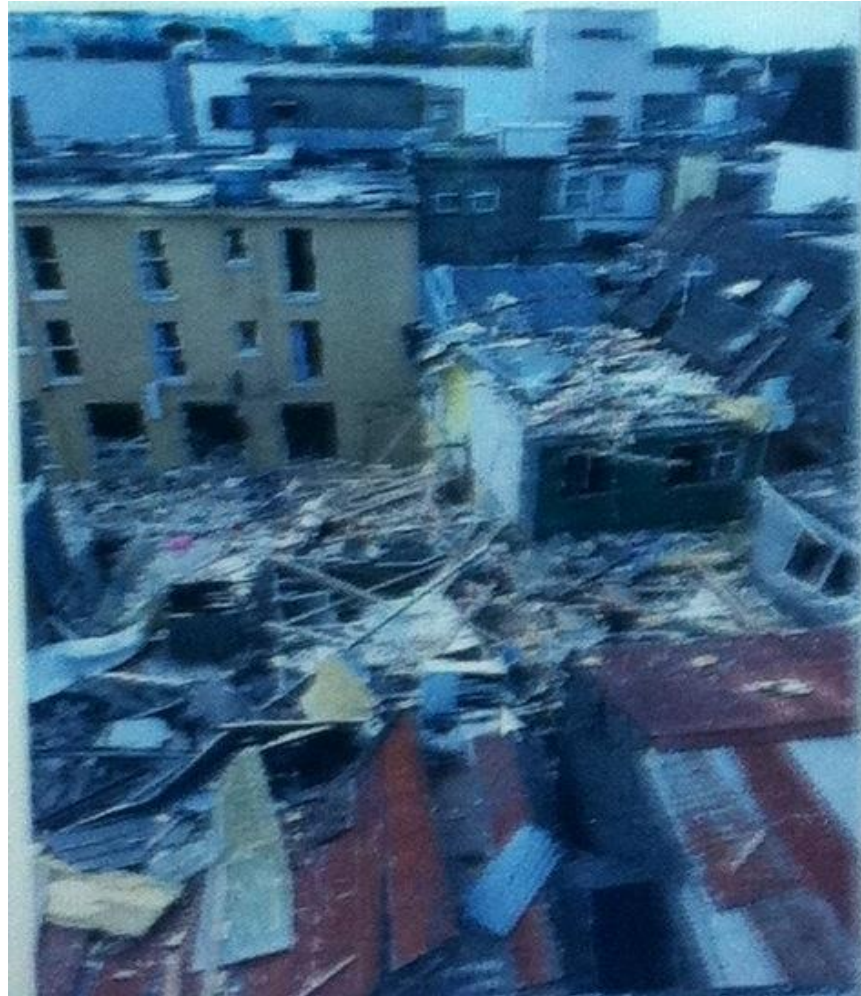
- Governed by I.S.3216:2010
- Usually less problematic.
- Tanks positioned by LPG supplier.
- Regular visits by delivery drivers.
- Sites using bulk tend to be less tight on space.



Cylinder LPG installations

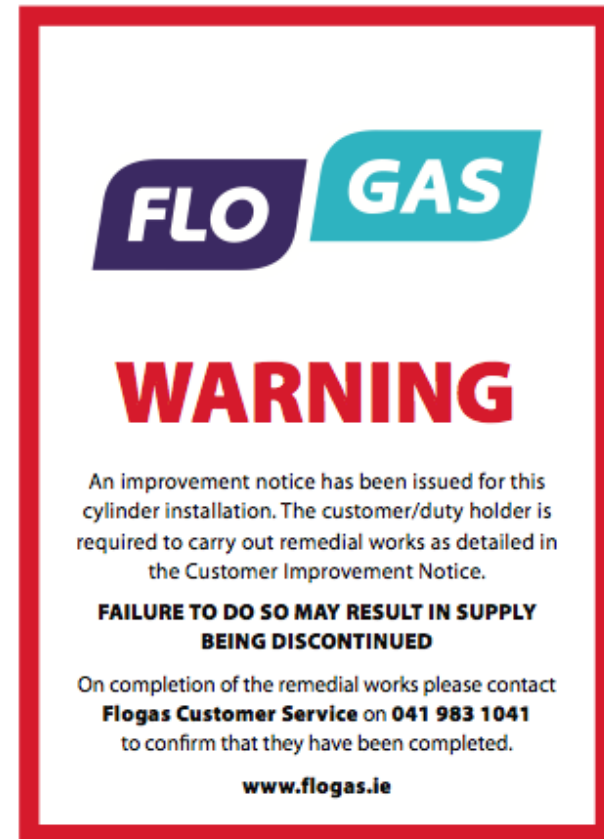
- Governed by I.S.820:2010
- More prone to problems/leaks than bulk.
- Often positioned by contractor/customer.
- Making and breaking of connections, often several times per week.
- Sites often use cylinders if they cannot meet bulk separation requirements.





Dealing with sub-standard installations

- Identify the problem.
- Assess the risk.
- Inform the customer.
- Document the problem.
- Take the appropriate action.





PROPANE CYLINDER CUSTOMER IMPROVEMENT NOTICE

Customer name: _____

Customer address: _____

Cylinder supplier issuing this notice: _____

	Defect Found	Tick if applies	Action required by Cylinder Supplier in addition to this notification	Action required by Customer
1	Gas leak or smell of gas on cylinders or installation.		Turn off cylinders if safe to do so.	Contact Flogas for advice or if cannot make safe. Arrange repair by Registered Gas Installer.
2	Sealing washer missing or in poor condition.		Replace sealing washer.	None
3	Pigtail cracked or worn.		Attach Warning Notice.	Arrange replacement by Cylinder Supplier or Registered Gas Installer.
4	Cylinders inside building or unventilated enclosure.		Do not supply. Immediately advise Flogas Customer Service Department. Attach Warning Notice.	Relocate cylinder installation using Registered Gas Installer in consultation with Flogas.
5	Cylinders in yard less than 15m ² which is fully enclosed on all sides (no ventilation).		Immediately advise Flogas Customer Service Department. Attach Warning Notice.	Relocate cylinder installation using Registered Gas Installer in consultation with Flogas.
6	Manifold/regulator assembly or pipework is not adequately supported.		Attach Warning Notice.	Arrange remedial work by Registered Gas Installer.
7	Pipework badly corroded.		Attach Warning Notice.	Arrange remedial work by Registered Gas Installer.
8	Cylinders less than 3 metres from opening into basement or cellar.		Attach Warning Notice.	Relocate cylinder installation using Registered Gas Installer in consultation with Flogas.
9	Cylinders less than 3 metres from flammable liquid storage.		Attach Warning Notice.	Relocate flammable liquid storage.
10	Cylinders less than 1.5m from combustible material/rubbish bins/air-conditioning unit/refrigeration unit/other appliances/refuse compactor/smoking area.		Attach Warning Notice.	Relocate offending items.
11	Cylinder signage inadequate.		Leave new signage with customer.	Arrange for signage to be displayed.
12	Other			

I have received this notice advising me of a safety-related defect and acknowledge that failing to rectify the defect(s) may result in supply being discontinued.

Customer Signature: _____

Cylinder Supplier Signature: _____

Date: _____

• In case of emergency, ring the Flogas 24-hour emergency number 041 9031041 •

Propane Cylinder Customer Improvement Notice

July 2014 Issue A



ENGINEERS
IRELAND



Dealing with persistent non-compliance

- Inform customer of intention to stop supplying
- Instruct distributor to stop supplying.
- Notify HSA, citing reason for technical stop.
- Notify Calor technical dept.

Cooperation with enforcement bodies

- Fire Officers
- Health & Safety Authority
- Declarations of conformity for licence applications.
- Opportunities to use certificates of conformity as leverage to improve installations.

Thank you for you attention.

